

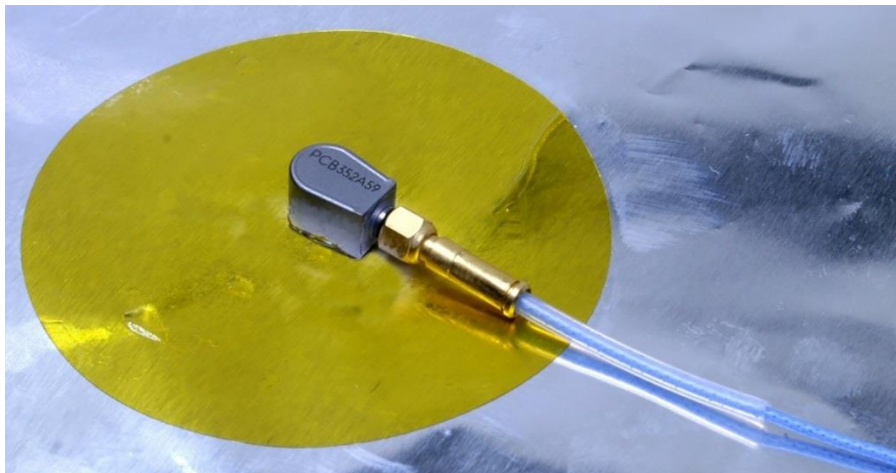
PCB Piezotronics, Inc. Launches Miniature ICP Teardrop Accelerometer
Designed for vibration testing of small structures

December 11, 2018, DEPEW, NY – PCB Piezotronics, Inc., a wholly owned subsidiary of MTS Systems Corporation (NASDAQ: MTSC), has released its smallest ICP teardrop accelerometer with a Transducer Electronic Data Sheet (TEDS) – Model 352A59. This single axis accelerometer was developed to minimize the effects of mass loading on small devices with an integral M3 connector and removable cable that can be easily routed within devices. The adhesive mounting and TEDS contribute to a quick, error-proof setup.

The 352A59 provides outstanding results during vibration testing of small structures, primarily because of its low 0.03 oz (0.9 gram) mass and sensitivity of 10 mV/g (1.0 mV/m/s²) over a frequency range from 1 to 10 kHz (+/-5%). The rugged, titanium housing enables Model 352A59 to operate in a range of +/- 500 g's (± 4900 m/s² pk) with shock limits to 20K-g's (± 98,000 m/s² pk).

Suggested applications include:

- Satellite & aircraft structures
- Military & consumer electronics
- General product validation



Model 352A59

PCB PIEZOTRONICS, INC. — CORPORATE HEADQUARTERS

3425 Walden Avenue, Depew, New York 14043-2495 USA

Phone: 716-684-0001 Fax: 716-684-0987

E-mail: info@pcb.com

Web site: www.pcb.com

AS9100 and ISO9001 Certified
ISO17025 Accredited

[Model 352A59](#) is available for immediate shipment. Visit www.pcb.com for additional information or contact Kevin Kolmetz, PCB Product Marketing Manager at (800) 828-8840 x2213 or kkolmetz@pcb.com.

About PCB Piezotronics Inc.

PCB Piezotronics, Inc. is a designer and manufacturer of microphones, vibration, pressure, force, torque, load, and strain sensors, as well as the pioneer of ICP technology used by design engineers and predictive maintenance professionals worldwide for test, measurement, monitoring, and control requirements in automotive, aerospace, industrial, R&D, military, educational, commercial, OEM applications, and more. With a worldwide customer support team, 24-hour SensorLine, and a global distribution network, PCB is committed to Total Customer Satisfaction. Visit www.pcb.com for more information. PCB Piezotronics, Inc. is a wholly owned subsidiary of MTS Systems Corporation. Additional information on MTS can be found at www.mts.com.

###

PCB PIEZOTRONICS, INC. — CORPORATE HEADQUARTERS
3425 Walden Avenue, Depew, New York 14043-2495 USA
Phone: 716-684-0001 Fax: 716-684-0987
E-mail: info@pcb.com
Web site: www.pcb.com
AS9100 and ISO9001 Certified
ISO17025 Accredited

Aufgrund laufender Weiterentwicklungen sind Änderungen der Spezifikationen vorbehalten. Alle Angaben vorbehaltlich Satz- und Druckfehler.