

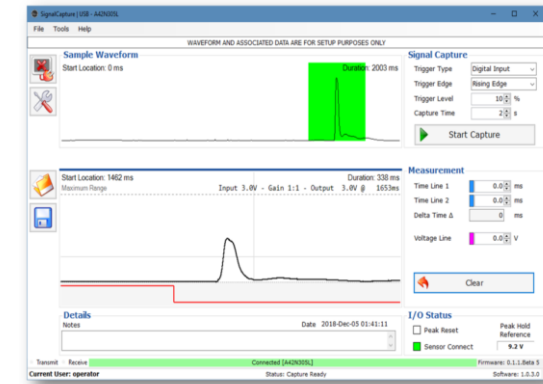
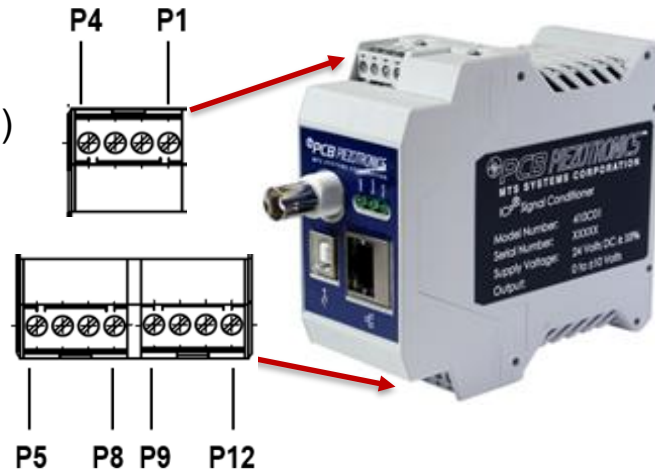
# 410C01 Quick Start Guide



## ELECTRICAL WIRING SOFTWARE INSTALLATION

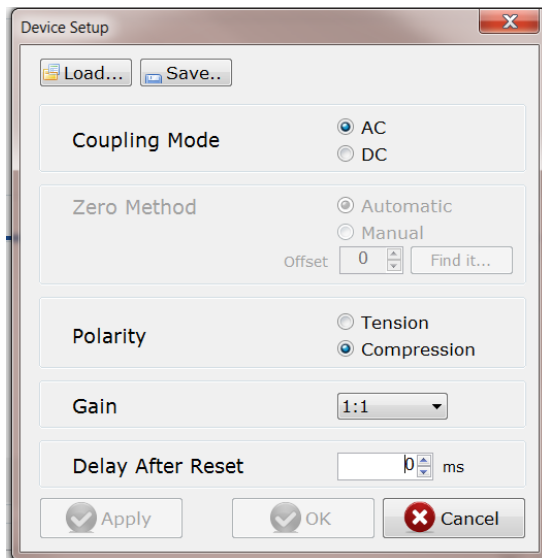
Pin 1: Peak Hold Analog Output  
 Pin 2: Waveform Analog Output  
 Pin 3: Analog Ground (Common)

Pin 7: + Peak Reset  
 Pin 8: - Peak Reset  
 Pin10: +24 Volts DC  
 Pin11: Power Ground



Download from: [www.pcb.com/410C01](http://www.pcb.com/410C01)

## SOFTWARE CONFIGURATION SUPPORTED ICP® SENSOR TYPES

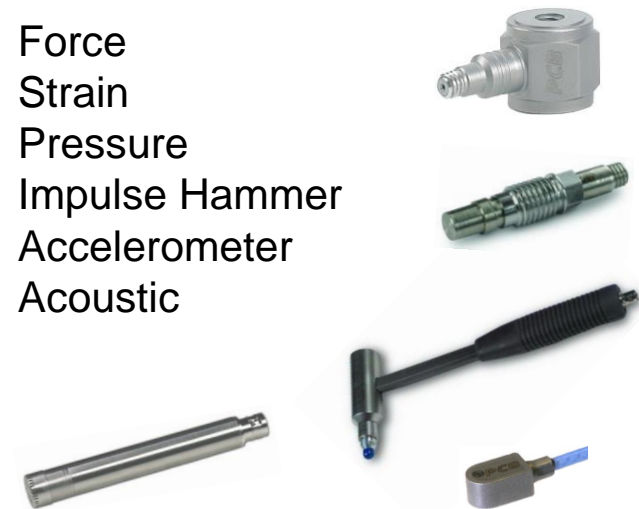


DOCUMENT NUMBER: 71945

### Factory Settings:

- Coupling Mode – AC
- Zero Method – Off in AC mode
- Polarity – Compression
- Gain – 1:1
- Delay After Reset – 0 msec

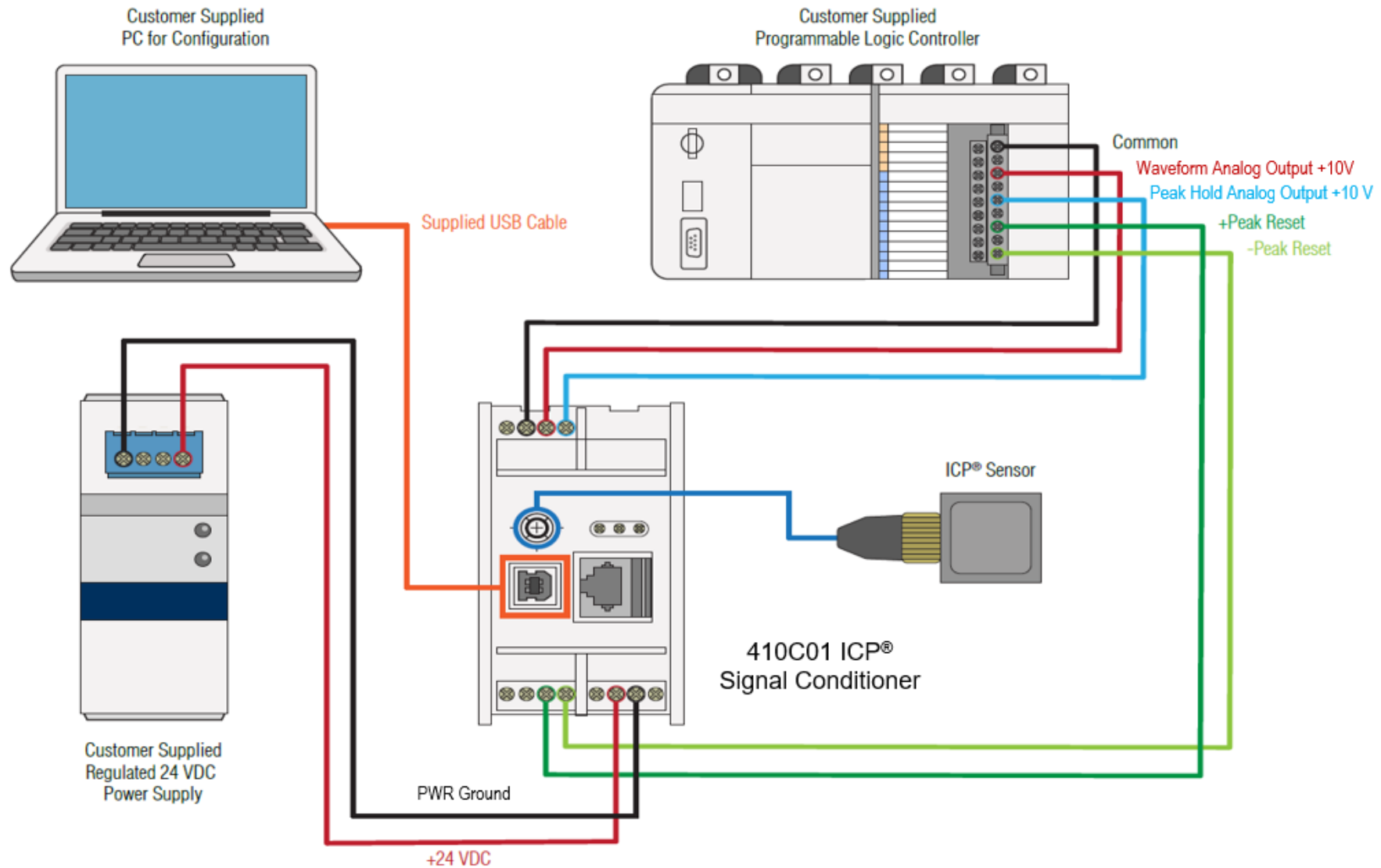
- ✓ Force
- ✓ Strain
- ✓ Pressure
- ✓ Impulse Hammer
- ✓ Accelerometer
- ✓ Acoustic



DOCUMENT REVISION: NR

# 410C01 Quick Start Guide

## TYPICAL SYSTEM SETUP



DOCUMENT NUMBER: 71945

DOCUMENT REVISION: NR

Aufgrund laufender Weiterentwicklungen sind Änderungen der Spezifikationen vorbehalten. Alle Angaben vorbehaltlich Satz- und Druckfehler.